



Lancaster
Farmland
Trust

2022 IMPACT REPORT

Our farms, soil, water, and roots are protected for all.



LANCASTER IS GROWING

Across the country, we are paving over our agricultural land at a rapid pace.

A recent report suggests Lancaster County will be one of the three “hardest-hit counties” in our state. We estimate that an additional 18,000 acres of farmland will be lost by 2040 - if we do not make a change.

Every acre counts. That’s more than 230 farms gone forever.

We’re on a mission to change that.





2022 AT A GLANCE

TOTAL AMOUNT RAISED
\$4.8M

EASEMENT DONATIONS
\$5.5M

FARMS PROTECTED
21

ACRES PROTECTED
1,258

WATER QUALITY PROJECTS
15







PROTECTING FARMLAND

In 2022, your support led to the permanent protection of 21 farms on 1,258 acres of farmland.

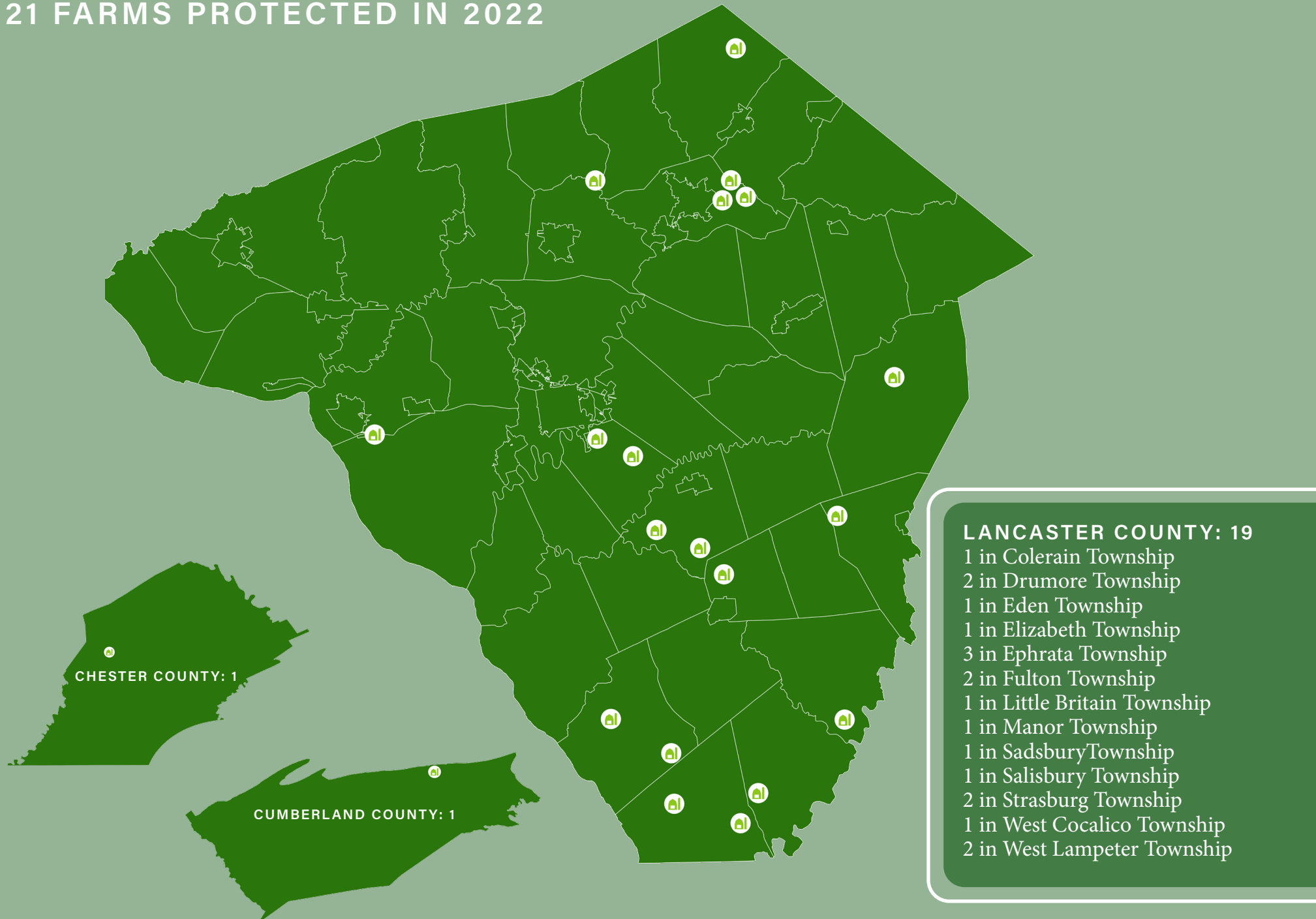
That is 21 more farms protected from development - 21 more farms that will exist for future generations.

When we preserve farmland, we protect our ability to source local food, bolster our local economy, invest in improving our soils and waterways, and support local farm families. When farmland is protected, we all benefit. This work is a legacy we pass on to future generations.

When we protect farmland, we preserve the foundation of what makes Lancaster County such a wonderful place to live.



21 FARMS PROTECTED IN 2022



All farms protected outside of Lancaster County are fully donated easements by the farmer.



CONSERVING WATER & SOIL

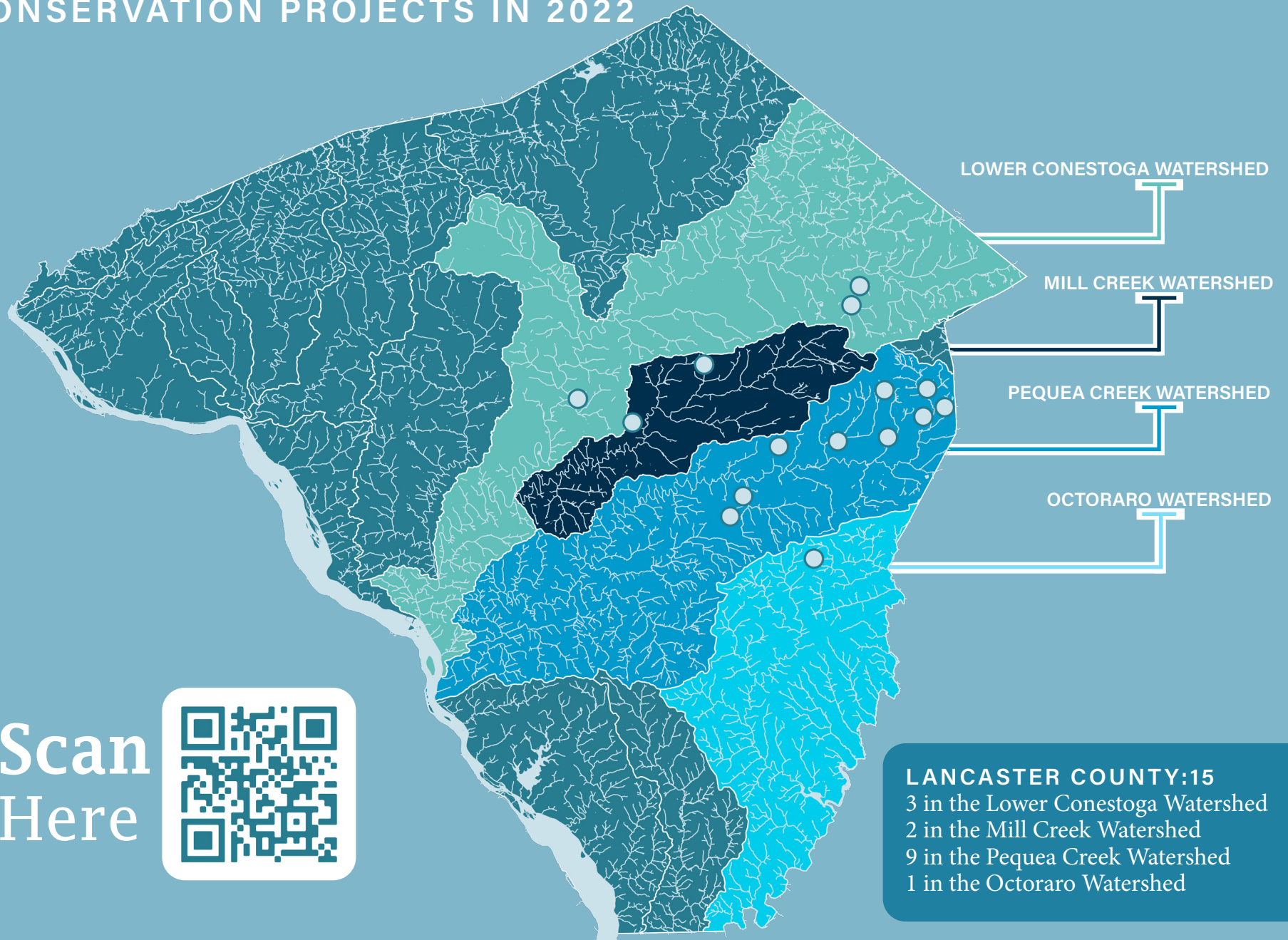
LFT continued our efforts in 2022 to lead the restoration of water and soil on farmland across the County. We added capacity to our conservation team, and in doing so, capitalized on the growing interest of farmers to implement best management practices that improve the operational and environmental performance of their farms. The results of LFT's skilled team of conservation and outreach specialists in 2022 speak for themselves - over 400 farm visits completed, resulting in the development of dozens of conservation plans, 12 Comprehensive Nutrient Management Plans, and multiple best management practice verifications.

Additionally, LFT staff managed fifteen construction projects in 2022. All fifteen involve the installation of best management practices like manure storage units, animal heavy use areas, stream crossings, and buffers, that will reduce the amount of pollutants entering Lancaster County waterways.

(Pollutants caused by excessive nutrients: nitrogen, phosphorous and sediment)



15 CONSERVATION PROJECTS IN 2022



These projects in the Pequea Creek, Lower Conestoga, Mill Creek, and Octoraro Watersheds were made possible through generous funding from the National Fish and Wildlife Foundation, Pennsylvania's Department of Environmental Protection, Pennsylvania's State Conservation Commission, the Campbell Foundation, the Shenk Foundation, the Chesapeake Bay Trust, the Lancaster County Community Foundation, the Lancaster County Conservation District, and the Lancaster Clean Water Partners.



CUMBERLAND COUNTY: 3 FARMS

FULTON COUNTY: 1 FARM

**SINCE OUR BEGINNING IN 1988
553 FARMS PROTECTED**

FRANKLIN COUNTY: 1 FARM

All farms protected outside of Lancaster County are fully donated easements by the farmer.



DAUPHIN COUNTY: 6 FARMS

LANCASTER COUNTY 553 FARMS:

11 in Bart Township
24 in Brecknock Township
10 in Caernarvon Township
9 in Clay Township
31 in Colerain Township
19 in Conestoga Township
1 in Conoy Township
13 in Drumore Township
22 in Earl Township
5 in East Cocalico Township
6 in East Donegal Township
6 in East Drumore Township
3 in East Earl Township
4 in East Hempfield Township
22 in East Lampeter Township
16 in Eden Township
12 in Elizabeth Township
6 in Ephrata Township
11 in Fulton Township
30 in Leacock Township
17 in Little Britain Township
5 in Manheim Township
14 in Manor Township

17 in Martic Township
7 in Mount Joy Township
18 in Paradise Township
13 in Penn Township
5 in Pequea Township
17 in Providence Township
16 in Rapho Township
18 in Sadsbury Township
31 in Salisbury Township
27 in Strasburg Township
35 in Upper Leacock Township
12 in Warwick Township
3 in West Cocalico Township
7 in West Donegal Township
11 in West Earl Township
8 in West Hempfield Township
11 in West Lampeter Township

CHESTER COUNTY: 4 FARMS



Thank You

**"Lancaster County - because of the soil
we have - we should take care of it.
Because it is one of the unique places in
the world and it just would be wrong to
cover it over with houses. We've got to
save something and you might
as well keep the best.
Let's keep the good ground."**

Frank Ludwig

THANK YOU TO OUR DONORS

Every success in these pages is owed to you, our community dedicated to the vision of our farms, soil, water, and roots protected for all. Your support and generosity are why Lancaster County is one of the best places to live in our country. You have enabled us to protect 553 farms on 34,928 acres of farmland. Because of your support, we have completed construction on more than 50 agricultural conservation projects - this is just the beginning of the work we can do together to ensure the protection of this land we love! Thank you for investing in Lancaster Farmland Trust.



Scan
Here





EVENTS

This year's community events brought together more than 1,000 supporters and friends across Lancaster County to raise funds - and awareness - for our mission and the importance of farmland preservation in Lancaster County. These events provide community members a chance to take in scenic landscapes, tour preserved farms, enjoy farm-fresh foods - and even greet a 3-hour-old calf. All of which would not be possible without our dedicated volunteers and sponsors who make them a success - we are incredibly grateful for your support!



Rhubarb Festival
Water Week Riparian Buffer Tour
Dutch Meadows Breakfast on the Farm
King Farm Breakfast on the Farm

Fisher Farm Breakfast on the Farm
Together for the Land
Strasburg Half-Marathon
Fall on the Farm

Lancaster County Restaurant Week
ExtraGive
Holiday Silent Auction

PARTNERSHIPS

Over 35 years, LFT has built partnerships with area businesses who have pledged their support to ensure our agricultural heritage is preserved for future generations to enjoy. From annual sponsors like the Wenger Group and Kitchen Kettle Village; to co-branding collaborations with local businesses like Fox Duck and Pour Man's Brewing Company; to beneficiary events hosted by our partners at Discover Lancaster and RunPA. Our work would not be possible without the generous community businesses dedicated to preserving what makes Lancaster County special. Thank you!



Sensenig's Feed Mill: 31 Years of Giving

As one of our longtime partners, Sensenig's Feed Mill in New Holland has supported LFT's work since 1991. This past year, the company sponsored our popular Breakfast on the Farm series, which had a special connection to their business. The Fisher family (who generously hosted the August 27th breakfast) are longtime customers of Sensenig, and have developed a relationship with the team over the years. Mike Sensenig, Owner, and Justin Brenneman, Dairy Nutrition Consultant, kindly attended the event and spoke to guests about feed and grain nutrition, their products, and the connections to hundreds of farm families - like the Fishers - they've built across Lancaster and neighboring counties who rely on the quality of their products. We thank the Sensenig's Feed Mill team for their commitment to local farmers and our mission!



COMMUNITY INVESTMENT FOR IMPACT

In August 2022, the Lancaster County Commissioners generously awarded Lancaster Farmland Trust \$1.52 million dollars of American Rescue Plan Act funding. LFT quickly put this tremendous investment by our community to work - starting the process of preserving 21 critical farms and securing Comprehensive Nutrient Management Plans on those farms that will lead to future conservation projects and water quality improvements.

While LFT's work on this project will continue through the next two years, the benefits this project brings to the community will last in perpetuity. First, this is a significant investment in the protection of farmland - over 1,500 acres of Lancaster County's productive soil will be preserved with these funds and leveraged against \$4.9 million in private match funding and donated easement value. Second, these acres will not just be preserved. The farmers of these operations are working with LFT to develop Comprehensive Nutrient Management Plans, an effective pathway towards the quick implementation of best management practices. These best management practices, with implementations like manure storage units, stream fencing and buffers, and improved animal walkways and crossings, work together to reduce pollutants in our waterways. LFT is extremely grateful for this significant investment of funds and will continue to protect that investment by delivering the outcomes of this project for Lancaster County - 1,500 acres of newly protected farmland, and conservation projects on those acres that will improve stream health and water quality in our community and in the Chesapeake Bay.

(Pollutants caused by excessive nutrients: nitrogen, phosphorous and sediment)



**Scan
Here**

...to learn more about
LFT's efforts to protect
land and water

"We continue to see the loss of farmland across the county, an ongoing concern of Lancastrians, and the agricultural sector is essential in providing clean water for all to enjoy. The Commissioners' action today will advance the community's desire to keep our beloved viewshed intact and enable our local farm community to thrive by assisting them with the resources necessary to achieve our collective clean water goals.

This funding will accelerate our preservation efforts of the vital natural resources of Lancaster County that produce our food, clean our streams and rivers, and recharge our groundwater."

Jeff Swinehart, LFT President & CEO



STRATEGIC PLAN

In 2022, Lancaster Farmland Trust invested in developing a Strategic Plan with Due East Partners to guide the organization's goals. Since our founding 34 years ago, LFT has preserved an average of 17 farms and 1,000 acres per year. We are committed to picking up the pace. Over the next three years, we will work with farm families and a broad and diverse group of partners to permanently preserve 75 farms and 5,000+ acres.

We recognize that these goals are bold, but they reflect the urgency of the moment. Each of us has a vital role to play in shaping this future, and it will take all of us together to achieve lasting progress.

Scan
Here



Accelerating Impact to Preserve Our Farms, Soil, Water, and Communities

PRESERVE

Protect more farmland and support thriving farms

CONSERVE

Lead the restoration of water and soil on farmland

CONNECT

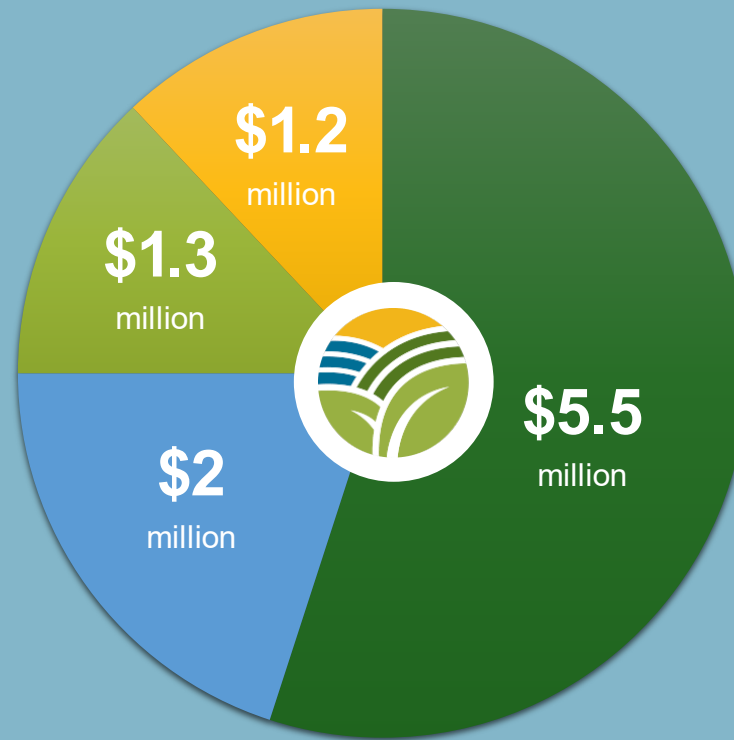
Increase visibility and partnerships to engage more people in our mission

SUSTAIN

Expand funding and organizational capacity for accelerated impact

\$10M A YEAR TO PRESERVE 25,000 MORE ACRES BY 2030

Join our movement and help us generate the public and private funding required to permanently preserve local farms and ensure a healthy, vibrant future for Lancaster today and for generations to come. There are many ways for you to get involved as a champion, advocate, partner and donor.



LANCASTER COUNTY



MUNICIPALITIES



LANCASTER FARMLAND TRUST/PUBLIC SOURCES

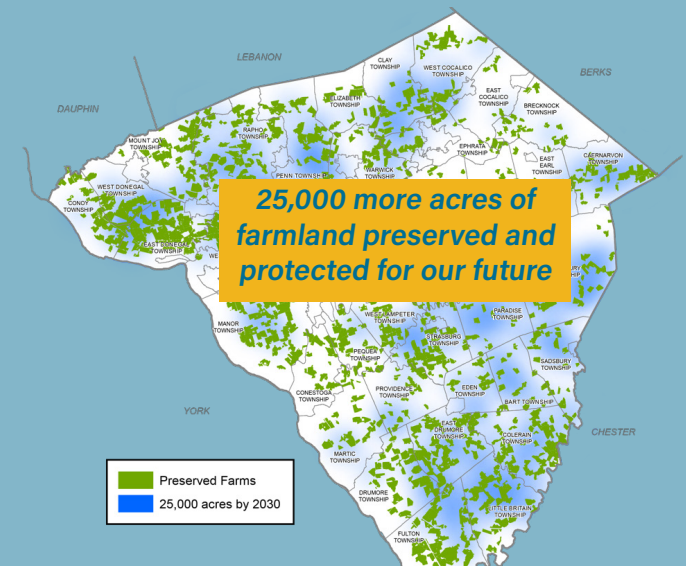


LANCASTER FARMLAND TRUST/PRIVATE SOURCES

"When you're out farming ground your family did 100 years ago . . . You appreciate what each of those generations had to endure to remain here. And what might we have to endure to pass it on, we don't know. But you feel you're a caretaker of it, that it'll be yours only for a time. You do what you can to respect it and enhance it; then you pass it on."

Clair and Mim Miller

2030 CRITICAL COUNTYWIDE RESULT





2022 EXPENSES

Easement Acquisitions

The cost of preserving 21 new farms in 2022

\$1,675,191

Water Quality Projects

\$\$ spent on conservation work + BMPs

\$1,538,344

Administration

This money helps LFT run

\$91,509

Stewardship and Outreach

Programmatic expenses to monitor/steward farms and engage/educate the community

\$993,100

Fundraising

The cost associated with raising money

\$298,596

2022 REVENUE

Easement Donations

This is the dollar value of easements that are donated to LFT for preservation

\$5,580,531

Contributions

This is the total financial support from YOU our donors

\$2,136,387

Grants

We apply for this money to help further our mission

\$2,385,820

Events

\$\$ brought in from our events

\$133,459

Fee for Service

This money is paid to LFT for staff work assisting other orgs

\$152,974

Our financial statements have been audited by Brown Schultz Sheridan & Fritz, an independent certified public accounting firm. Having expended more than \$750,000 of federal award funds in 2022, LFT's audit included a successful review of both our financial statements and compliance with Federal award program requirements.





2022

Since 1988 Lancaster Farmland Trust has protected 553 farms on 34,928 acres and completed construction on more than 50 agricultural conservation projects.

Here's to the next 30+ years...

...to vigorously accelerate the permanent protection and stewardship of farmland.



Scan
Here

...to watch the stories of the farm
pictured here and on the cover.

You can make an impact at LancasterFarmlandTrust.org