



Lancaster
Farmland
Trust

IMPACT REPORT 2021





LANCASTER IS GROWING

Every year, 1,200 acres of Lancaster farmland are lost to development.

A recent report names Lancaster County as one of the hardest hit counties in Pennsylvania when it comes to loss of farmland. With a projected 18,000 acres of additional farmland lost by 2040 - 18,000 acres of farmland is the equivalent of 231 average-sized Lancaster County farms.

We're on a mission to change that.



***“Lancaster County – because of the soil we have – we should take care of it.
Because it is one of the unique places in the world and it just would be wrong to cover it over with houses.
We’ve got to save something and you might as well keep the best. Let’s keep the good ground.”
– Frank Ludwig, Preserved Farm Owner***



2021 AT A GLANCE

TOTAL AMOUNT RAISED
\$5.02M

EASEMENT DONATIONS
\$4.55M

FARMS PROTECTED
21

ACRES PROTECTED
1,703

WATER QUALITY PROJECTS
8







PROTECTING FARMLAND

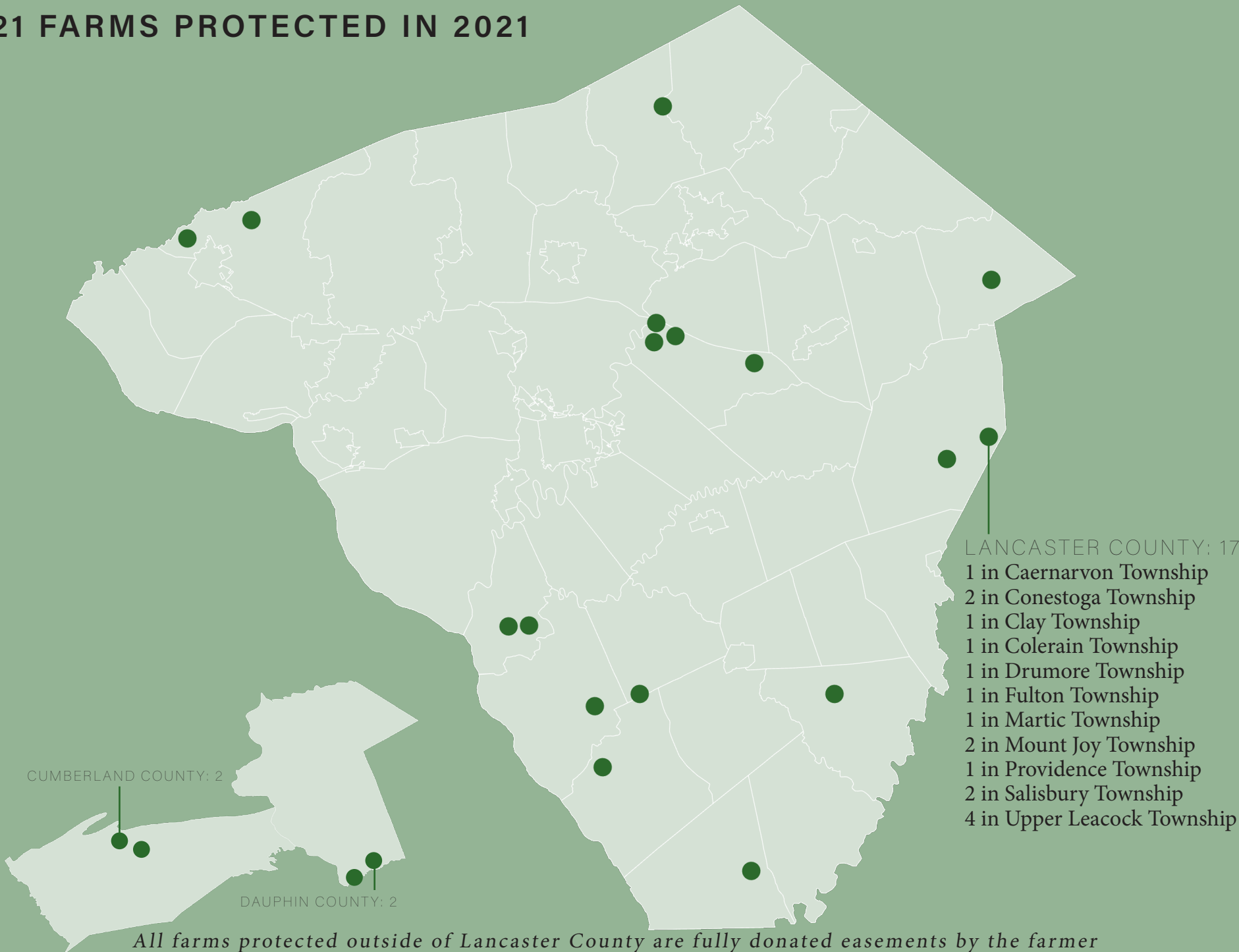
In 2021, your support led to the permanent protection of 21 farms on 1,703 acres of farmland.

What an impact! That is 21 more farms forever protected from development, forever utilized as prime farmland. It provides us with a quality of life that is unique to Lancaster County. Protecting farmland protects our ability to source local food and supports the vital work of farm families. When farmland is protected, the impact is far-reaching. This work is a legacy we get to pass on to future generations.

We are overwhelmed with gratitude for our community's generosity which continues to be a catalyst for the mission of Lancaster Farmland Trust.



21 FARMS PROTECTED IN 2021



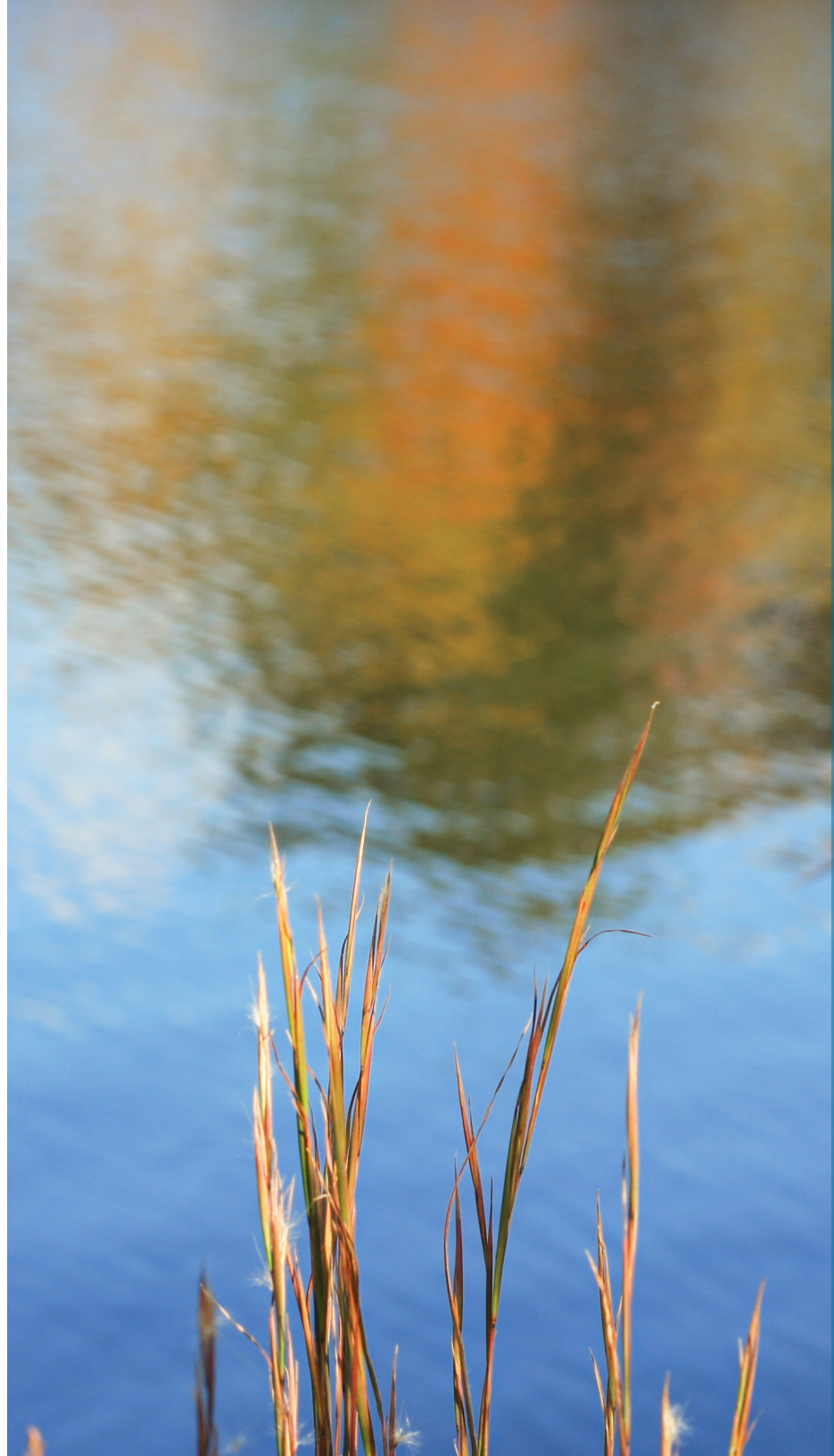
All farms protected outside of Lancaster County are fully donated easements by the farmer



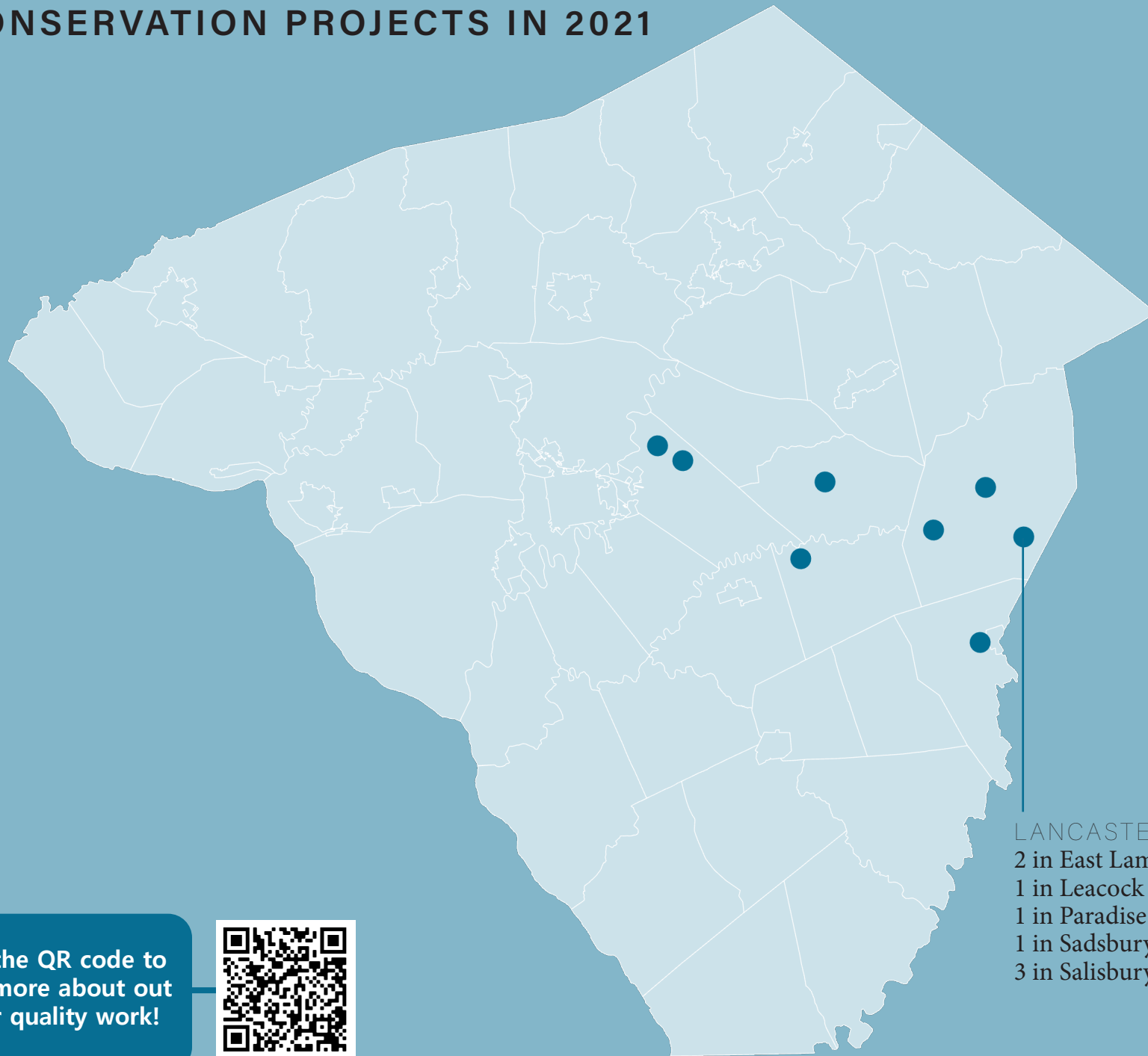
WATER QUALITY WORK

2021 brought significant growth in our water quality conservation work. LFT staff wrapped up farm visits to 600 Pequea Creek Watershed farmers, resulting in the development of 200 conservation plans that address a farm's natural resource concerns. Eight construction projects were also finished, resulting in the installation of best management practices in barnyards - like larger manure storage units, concrete improvements and roofing for heavy use areas, and stormwater controls, as well as stream improvements - like stream crossings, exclusion fencing, and riparian buffers.

This work in the Pequea Creek, Lower Conestoga, and Octoraro Watersheds was made possible through generous funding from the National Fish and Wildlife Foundation, the Environmental Defense Fund, Pennsylvania's Commonwealth Financing Authority, the Lancaster County Community Foundation, the Lancaster County Conservation District, and the Lancaster Clean Water Partners.



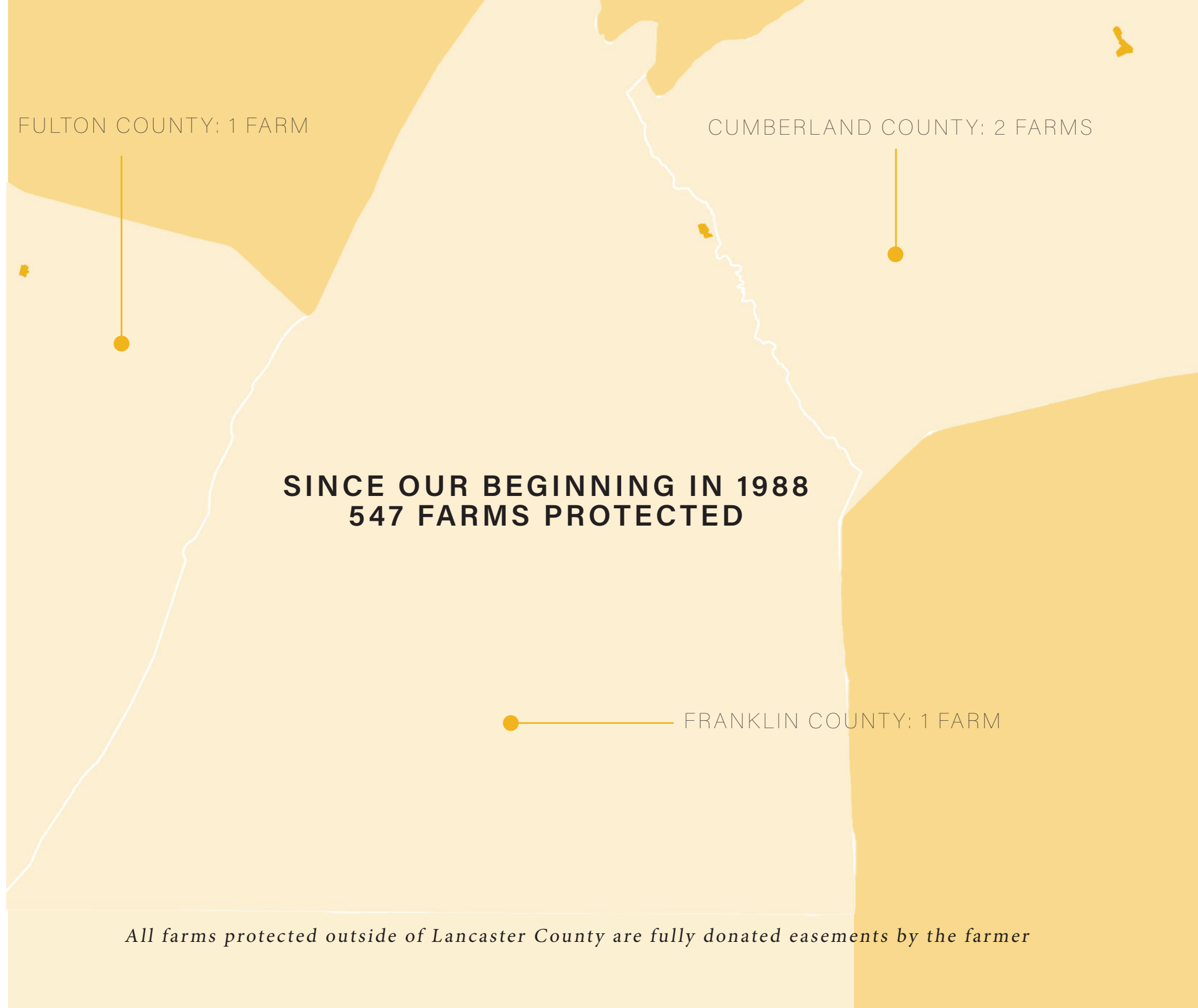
8 CONSERVATION PROJECTS IN 2021



LANCASTER COUNTY
2 in East Lampeter Township
1 in Leacock Township
1 in Paradise Township
1 in Sadsbury Township
3 in Salisbury Township

Scan the QR code to
learn more about our
water quality work!





**SINCE OUR BEGINNING IN 1988
547 FARMS PROTECTED**

All farms protected outside of Lancaster County are fully donated easements by the farmer



DAUPHIN COUNTY: 6 FARMS

CHESTER COUNTY: 3 FARMS

LANCASTER COUNTY 534 FARMS:

11 in Bart Township
24 in Brecknock Township
10 in Caernarvon Township
9 in Clay Township
30 in Colerain Township
19 in Conestoga Township
1 in Conoy Township
11 in Drumore Township
22 in Earl Township
5 in East Cocalico Township
6 in East Donegal Township
6 in East Drumore Township
3 in East Earl Township
4 in East Hempfield Township
22 in East Lampeter Township
15 in Eden Township
11 in Elizabeth Township
3 in Ephrata Township
9 in Fulton Township
30 in Leacock Township
16 in Little Britain Township
5 in Manheim Township
13 in Manor Township

17 in Martic Township
7 in Mount Joy Township
18 in Paradise Township
13 in Penn Township
5 in Pequea Township
17 in Providence Township
16 in Rapho Township
17 in Sadsbury Township
30 in Salisbury Township
25 in Strasburg Township
35 in Upper Leacock Township
12 in Warwick Township
2 in West Cocalico Township
7 in West Donegal Township
11 in West Earl Township
8 in West Hempfield Township
9 in West Lampeter Township



OUR COMMUNITY



Land Steward

This special group of supporters sustains LFT and increases the impact of their giving through a monthly, tax-deductible contribution. Monthly givers provide LFT with a steady stream of resources throughout the year – which helps us to plan ahead and be ready to help when farmers call.



Heirloom Circle

Introduced to recognize friends who have been contributing to our mission of farmland protection and stewardship for 25 years or more. This small group of people have provided the consistent support that has sustained the organization throughout its history. This enduring support - year after year – is what helps Lancaster Farmland Trust to continue protecting the land we love.



Amos Funk Legacy Society


Established to recognize donors who have made the ultimate commitment to farmland preservation in Lancaster County by including LFT in their estate plans. The Society is named after the ‘father of farmland preservation’ and one of Lancaster Farmland Trust’s founders, Amos Funk, who dedicated his life’s work to protecting and sustaining agriculture. We are grateful to these individuals who have informed us of their generous commitment, helping LFT to plan for the future.

THANK YOU TO OUR DONORS


The strides we've made in protecting our vital farmland are owed to you – a community that is committed to the vision of protecting our farms, our food and our exceptional quality of life for the future. Your generosity is the driving force behind our work. Without your passionate support, our future would look quite different. More than likely, we would be wishing we could turn back time. Fortunately, you have been steadfast in your support, and the impact of your giving is felt today and will be appreciated tomorrow. Thank you for investing in Lancaster Farmland Trust and this vital work.

Scan the QR code to
view our
2021 Honor Roll!





“The land isn’t ours. It was given to us.
So we give it on to the next generation.
We don’t pave it over.
No, no. We don’t pave it over.”
– Henry Beiler, Preserved Farm Owner

An aerial photograph of a rural landscape. In the foreground, there are several large, rectangular agricultural fields. Some fields are green, indicating crops like corn, while others are brown, suggesting they have been plowed or are fallow. A dirt road or path runs through the fields. In the middle ground, there is a small farmstead with several white buildings, including a barn and a house, and a tall, cylindrical silo. The farm is surrounded by a dense forest of green trees. In the background, the forest continues to the horizon, with some distant hills visible under a clear sky.

“When you’re out farming ground your family did 100 years ago . . .
You appreciate what each of those generations had to endure to remain here.
And what might we have to endure to pass it on, we don’t know.
But you feel you’re a caretaker of it, that it’ll be yours only for a time.
You do what you can to respect it and enhance it; then you pass it on.”
- Clair and Mim Miller, Preserved Farm Owners



A MESSAGE FROM OUR BOARD

What an incredible year. Our community came together in ways we've never seen before. While we found ourselves still navigating the challenging circumstances of our current world, we all rose to the occasion in ways that have renewed our hope in the future. For Lancaster Farmland Trust our future means everything; and you've helped us to lay a solid foundation for what's to come.

In 2021, that foundation included 21 farms and 1,703 acres of farmland protected. These farms were part of a larger campaign – Honoring the Promise – the first ever capital campaign embarked on by LFT. I'm proud to report that, with your tremendous support, this three-year effort raised more than \$8.4 million and helped to protect a total of 62 farms and 4,040 acres of farmland. Hundreds of gifts, including an unprecedented \$2 million matching gift from the Steinman Foundation, leveraged nearly \$22.5 million from a variety of sources and made it possible for LFT to make a significant investment in our Amos Funk Land Stewardship Fund to ensure the long-term stewardship of protected farms.

As we accelerated our land protection efforts, we also doubled down on resource conservation, connecting millions of dollars in technical and financial support to farm families across Lancaster County. This support helped farmers meet water quality standards and propelled Lancaster County and Pennsylvania toward its water quality goals. LFT's conservation work with the Plain community was honored by the Pennsylvania Department of Environmental Protection and Governor Wolf with a Governor's Award for Excellence – one of only 13 statewide efforts honored.

And finally, the organization officially transitioned to a new generation of leadership. Executive Director Karen Martynick, who passionately led Lancaster Farmland Trust for 17 years, retired. Now, Jeff Swinehart, President & CEO, is setting the course for the next phase of the organization – a bold, new chapter in our evolution.

We hope you know how much your dedication to our mission means to us, and the important role you play in advancing farmland protection and conservation in Lancaster County. No one knows what the future will bring but – together – we can make it bright.

-Don Hess, *Chair*

Board of Trustees

Don Hess, *Chair*
Jeff Kirk, *Vice Chair*
Kenneth S. Lewis, *Treasurer*
Emily Bell, *Secretary*

Julie Bard-Ziegler
Emanuel Beiler
Sam Clement
Melissa Falk

Kendra Gottshall
Nate Hoover
Lisa Horn
Benjamin F. Riggs, Jr.

Bob Shoemaker
Christ Taylor
Maureen Gimpel Maley
Abner Stoltzfus
Larry Shirk



OUR STAFF

It takes a lot of work with a wide variety of talents to make the mission of Lancaster Farmland Trust possible. We couldn't accomplish this without the work of our diligent staff: from all the steps that go into preserving a farm, executing hundreds of farm visits, keeping the office and finances organized and running, managing and applying for grants, to connecting with our community through events, relationships, and publications. Our staff of 14 continues to go above and beyond in their work - we are incredibly grateful to them.

Staff

Amy Baumann	Jonathan Denlinger	Gordon Hoover	Kristin Raab
Mikaela Bender-Rice	Phil Dunn	Maddie Klein	Jeff Swinehart
Aidan Das	Dianna Hendrick	Laura Komara	
Stephanie Denton	Amanda Hickle	Jeb Musser	





EVENTS & PARTNERSHIPS

Together for the Land

Lancaster Farmland Trust celebrated farmland preservation and Lancaster County agriculture at its Together for the Land event on October 19, 2021. Friends, farmers, and supporters attended to honor the commitment the Lancaster County community has made to the land. The event, held at The Farm at Eagles Ridge, raised more than \$152,000 for farmland preservation.

Preserved Farm Bike Routes

Lancaster Farmland Trust's savviest cycling friends helped create unforgettable bike routes on some roads less taken for more scenic and peaceful rides alongside preserved farms. These three routes in New Holland, Mount Joy, and Lancaster City/Strasburg were released virtually to the public last fall.

Brews & Views

On August 28, 2021, families joined LFT at the Bulls Head Beer Garden's "Battle of the Breweries" at Kissel Valley Farm for some food, brews and live music, all while taking in the views of preserved farmland.

Digging in

In 2021, LFT hosted a series of webinars with the folks who have a hand – literally – in Lancaster County's food and farming system. Supporters tuned in for documentary-style videos, followed by a post-screening Q&A with LFT staff and experts from the field on topics like: farm to shelf, cleaner streams, and farm to restaurant.

Breakfast on the Farm

Throughout the summer of 2021, supporters gathered on three Lancaster County farms to enjoy breakfast and meet landowners interested in farmland preservation. Each farm shared its own unique agricultural experience, including Pennsylvania's only designated Tricentennial Farm. With each event selling out, the first Breakfast series was an amazing success!



Lancaster County Restaurant Week

Last October, Discover Lancaster held the first-ever Lancaster County Restaurant Week - benefiting Lancaster Farmland Trust! Thanks to the generosity of Discover Lancaster and participating restaurants, proceeds from the week went towards farmland preservation and conservation. Twenty-six restaurants highlighted local farms and offered food and drink specials to help raise awareness and over \$7,000 for farmland preservation.

Foxduck Partnership

You may have seen our new “Long Live Local” badge designed by Foxduck, but did you know you can also grab one of our designs on a t-shirt?! Through Foxduck’s “Highlight” program, you can contribute to LFT by purchasing the “Long Live Local” shirt on their website.

Rhubarb Festival

Kitchen Kettle Village’s annual Rhubarb Festival returned in May 2021 for another weekend JAM-packed with fun. LFT volunteers and staff helped at the fresh rhubarb stand, where 300lbs of rhubarb bunches were sold alongside rhubarb-themed cookbooks to benefit farmland preservation and spark interest of locals and tourists in the area’s dwindling farmland and our efforts to save it. The weekend also included dozens of competitors racing homemade “cars” crafted from rhubarb stalks to raise funds – a total of \$6,000 to be exact! – for LFT.





THE STATE OF FARMLAND PRESERVATION IN LANCASTER COUNTY



In June 2021, Lancaster Farmland Trust debuted a comprehensive report on farmland preservation entitled *The State of Farmland Preservation in Lancaster County* at a community roundtable hosted by Lancaster Newspapers.

The roundtable – moderated by Steinman Communications CEO, Robert Krasne – engaged a variety of community leaders in discussion about farmland protection and the best strategies for protecting land, managing growth, and leveraging resources for the future of Lancaster County. The report re-ignited a conversation about farmland protection – what Lancaster County has accomplished so far and, most importantly, what we envision for the future and how we achieve that vision.

One important fact from the report that was: there are 357,000 acres of land in Lancaster County that are not zoned for development and are not protected. The question is: What happens to that land in the future? Farmland is critically important to Lancaster County. It's part of the fabric of the community. The stewardship of that farmland is not only the responsibility of the farmers who tend the fields, it is the obligation of the community that reaps its benefits on a daily basis. Preserving that land is a legacy we can leave for future generations if we are willing to make the investment.

The State of Farmland Preservation in Lancaster County publication received an award of recognition from Lancaster County Planning at the places2040 Planning Leadership Awards Celebration.

THE State of Farmland Preservation IN LANCASTER COUNTY

Executive Summary



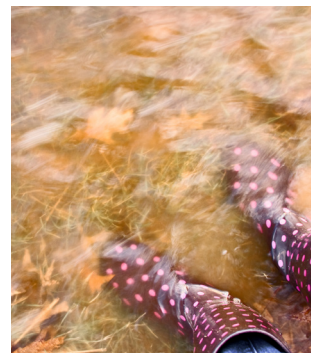
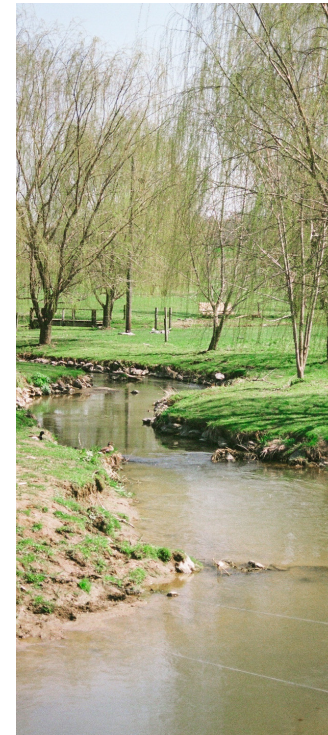
GOVERNOR'S AWARD FOR ENVIRONMENTAL EXCELLENCE

LFT was honored with a 2021 Governor's Award for Environmental Excellence. To reduce nutrient and sediment pollution flowing to the Chesapeake Bay, LFT worked with Salisbury Township, TeamAg Inc., and the Environmental Defense Fund to help local farmers write conservation plans and implement best management practices on their farms.

LFT's Agricultural Outreach Coordinator, Gordon Hoover, visited all of the farm operations in Salisbury Township, promoting significant change within the agricultural community through their conservation and clean water approach. Additionally, the team developed four 'learning farms' where farmers attended field days to see before-and-after examples of fully implemented conservation plans.

The outcome - new conservation plans developed, BMP opportunities identified, and a whole-stream buffer installed. The project also, and perhaps more importantly, created a community-wide change that is spilling over the borders of Salisbury Township, into neighboring municipalities, and down the Pequea Creek Watershed. Thank you to our partners, staff, and supporters who helped make this project a success!

This project was made possible through generous grant funds provided by the National Fish and Wildlife Foundation and the Environmental Defense Fund.

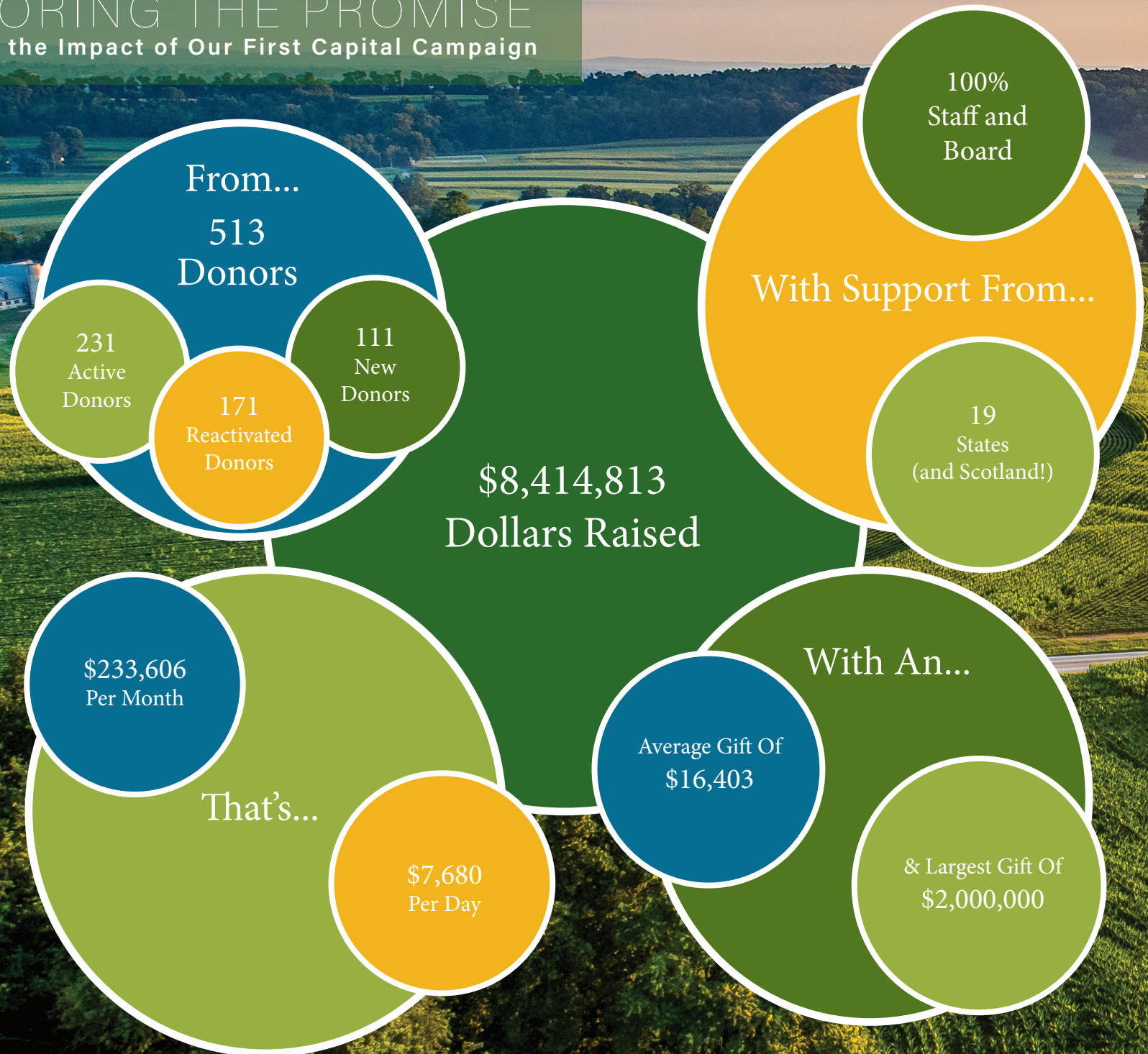




HONORING THE PROMISE

A Look at the Impact of Our First Capital Campaign

LANCASTER FARMLAND TRUST | IMPACT REPORT 2021





\$22,437,819
Total Dollars Leveraged

\$12,789,444
Easement Donations

\$1,233,562
Additional Funding

\$8,414,813
Campaign
Dollars Raised

\$7.5 Million
Campaign Goal

62 

Farms Protected Forever
that's 4,040
acres of land
that have...




2,324
acres of
prime soil


394
acres of
forest


93,668
feet of
stream
frontage

In December of 2021 the Honoring the Promise capital campaign came to a close raising \$8.4 million, exceeding our \$7.5 million goal. This enabled the preservation of 62 farms and 4,040 acres of land, which includes 93,668 feet of stream frontage and 394 acres of forested land.

Because of our community's support of the Honoring the Promise capital campaign, we are leaving a remarkable legacy to future generations – our farmland and natural resources protected in perpetuity.

Scan the QR code to
read the final capital
campaign report!

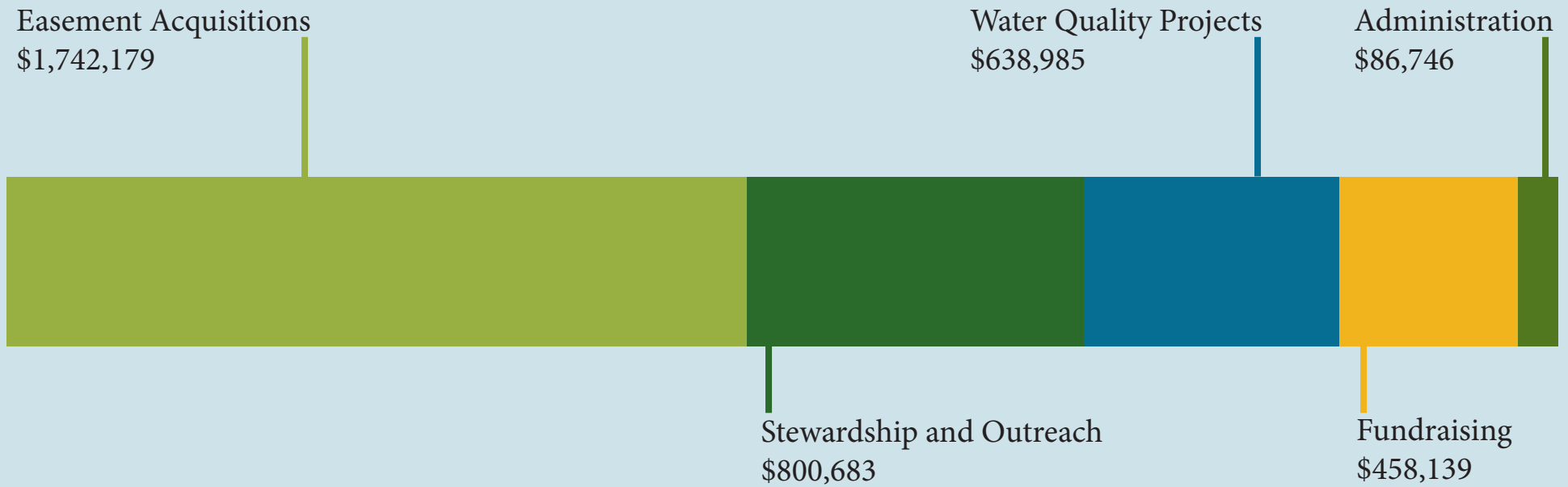




2021 REVENUE



2021 EXPENSES





A REFLECTION ON 2021 - THANK YOU

What a year 2021 was—full of growth, success, and an overflow of community support to protect and steward the vital farmland of Lancaster County. This year we preserved more acres of farmland than we have since 2008 - we couldn't have done it without the support of engaged partners like you! Protecting farmland is the core of Lancaster Farmland Trust. This year LFT protected 21 farms made up of 1,703 acres of farmland.

In 2021 we deepened our focus on our water quality work. We know aiding farmers in conservation practices on preserved farms is essential to stewarding the beautiful resources of Lancaster County. Our work in conservation earned us the Governor's Awards for Environmental Excellence. LFT completed more than 600 one-on-one farm visits. From these visits, LFT assisted with 200 conservation plans that help make our waterways clean and clear. Through this process, we saw the completion of eight water quality projects. The results of this work? Reduction of 23,000 lbs of nitrogen and 150 tons of sediment from our waterways.

This year saw the active phase of our Honoring the Promise capital campaign coming to a close. The campaign raised more than \$8.4 million, exceeding our \$7.5 million goal and enabling the preservation of 62 farms on 4,040 acres of land, which includes nearly 94,000 feet of stream frontage and over 390 acres of forested land. Because of our community's support, we are leaving a legacy for farmland preservation and entering the years to come with excitement and expectation.

We hope this impact report is a catalyst for all that is possible in the years to come. Thank you for joining us in preserving and conserving the beautiful resources of Lancaster County.

-Jeff Swinehart, President & CEO



*“Thank you for joining
us in preserving and
conserving the
beautiful resources of
Lancaster County.”*

Since 1988 Lancaster Farmland Trust has:

Protected 547 farms on 33,670 acres and completed construction on 40 agricultural conservation projects

